



Pacific County, Washington



**Pacific County
Economic Development Council**

530 Commercial Street
Raymond, Washington 98577

Phone: 360-875-9330
360-642-9330

Fax: 360-875-9305

E-mail: edpcog@pacifiedc.org

Web: www.pacifiedc.org

ECONOMIC SNAPSHOT

2008



Pacific County Ec

LAND

Private Timber Land	424,479 acres
Public Timber Land	37,009 acres
Oyster Beds	26,260 acres
Agriculture Land	16,085 acres

Source: Pacific County Assessor

GENERAL

Average # Days Rain Fall (> .01")	85.48 Annually
Average Temperature	51.3
Elevation	Sea level—30'
Area	975 Square miles

2006 GROSS BUSINESS INCOME BY INDUSTRY

Education	\$178,563	10
Tourism	\$13,391,808	132
Technology	\$65,515,730	428
Services	\$72,830,353	360
Retail	\$138,856,977	526
Natural Resources	\$149,716,845	307

Source: Department of Revenue, 2006

2006 EMPLOYEE WAGES BY INDUSTRY

Government	1,890	\$69,349,115
Hospitality/Tourism/Retail	1,614	\$24,894,735
Services	1,195	\$24,671,050
Manufacturing	954	\$26,853,416
Agriculture/fishing	531	\$13,781,209

Source: Workforceemployer, 2006

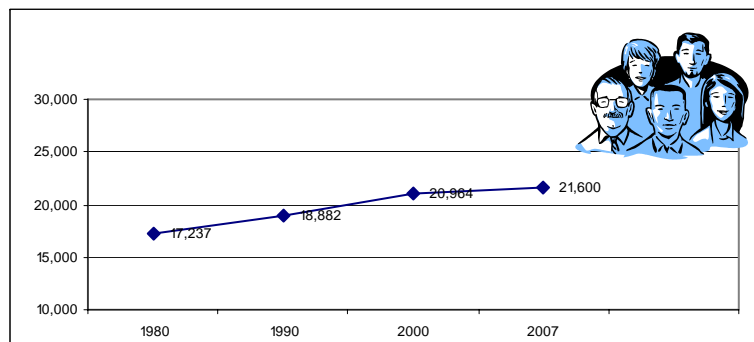
**Pacific County
Economic Development Council**

COST OF LIVING

County	COLI	2007 Median Home Price
Washington State	109.92	\$396,900
Thurston	101.98	\$266,000
Lewis	93.60	\$200,000
Grays Harbor	88.11	\$166,000
PACIFIC	95.80	\$155,000

Source: WSU Washington Center for Real Estate Research & www.bestplaces.net

COUNTY POPULATION



Source: Office of Financial Management, 2007 Estimate

CITIES POPULATION

Ilwaco	1,040	www.ilwacowashington.com
Long Beach	1,460	www.longbeachwa.gov
Raymond	3,005	www.raymondwashington.com
South Bend	1,770	www.users.techline.com/sbcity

Source: Office of Financial Management, 2007 Estimate

INDUSTRY SECTORS (NAICS)

	# of firms	Employment
Agriculture, forestry, fishing and hunting	118	539
Mining	3	35
Utilities	*	*
Construction	70	162
Manufacturing	35	781
Wholesale trade	17	26
Retail trade	95	575
Transportation and warehousing	19	29
Information	5	43
Finance and insurance	17	153
Real estate and rental and leasing	13	24
SERVICES	430	1,718
Professional and technical services	31	85
Management of companies and enterprises	*	*
Administrative and waste services	19	81
Educational services	0	0
Health care and social assistance	39	431
Arts, entertainment, and recreation	18	61
Accommodation and food services	111	710
Other services, except public administration	212	350
Federal Government	5	63
State Government	18	302
Local Government	28	1,458

Source: Workforceexplorer

AVERAGE ANNUAL COUNTY LABOR FORCE

Year	Labor Force	Unemp.	Unemp. Rate
2007	9710	980	6.0%
2006	9150	610	6.6%
2005	9130	650	7.1%
2004	8060	600	7.4%
2003	8160	730	8.9%
2002	7840	680	8.7%
2001	7700	680	8.8%

Source: Washington State Employment Security Department
www.workforceexplorer.com, August 2004

Economic Snapshot

TAX BASE

Taxable Retail Sales:	\$195,060,498
Change from previous year:	2.8%
Businesses reporting retail sales:	5,895
Change from previous year:	8.6%

Source: Department of Revenue, 2006

FISHING / SHELLFISH

Pacific County's Willapa Bay produces over 23% of the Nation's oysters and 2/3 of Washington State's oysters. The Port of Peninsula reports that between 270,000-300,000 bushels of oysters are brought in over their dock annually.

Revenue

\$31.5 Million—Fishing/Shellfish

Personal Income

\$30 Million—Fishing
\$17 Million—Shellfish

Landings

24 Million Pounds—Fishing
5.5 Million Pounds—Shellfish

Jobs

2000+—Fishing & Shellfish

PNCERS Report 2000

PORTS

Port of Chinook	(360) 777-8797
Port of Ilwaco	www.portofilwaco.org
Port of Peninsula	www.portofpeninsula.org
Port of Willapa Harbor	www.portofwillapaharbor.com

Pacific County
Economic Development Council

Pacific County

Pacific County is bordered by the Columbia River, the Pacific Ocean and the pristine Willapa Bay. Traditionally, our County's economy has been natural resource based with an abundance of timber covering approximately 85% of our 975 square miles, thriving oyster beds, and our sandy soils along our coastline known as the "cranberry coast." With over 25 miles of beach area located along the Pacific Ocean our coastal life provides exciting activities and endless business opportunities. Access to our rural county is an easy drive from Interstate 5

via Highway 12, Highway 6, and Highway 4 connecting you to coastal Highway 101. Enjoy your drive along Highway 101 and witness



spectacular views, our pristine bay, and wildlife abundance. Our four municipalities, four ports, and county government believe in developing and supporting a strong community and economic infrastructure that sustains our existing businesses while encouraging entrepreneurial business start ups.



LARGEST EMPLOYERS

Pacific County	210
Weyerhaeuser Company	193
Coast Seafoods	181
Jessie's Ilwaco Fish	159
Ocean Beach Hospital	154
Naselle Youth Camp	122
Willapa Harbor Hospital	112
South Bend School District	101
Dennis Company	98
Raymond School District	86

Source: PCEDC

**Pacific County
Economic Development Council**